


 (F) Primary 4 Science (Term 1) - Henry Park  Duplicate Print Delete Assign Test

Test Introduction

[+ Add Introduction](#)

18 Questions (18 Points)

Question Bank: 20,000 Questions 

Test Questions

1 Test Assignment

Question 1

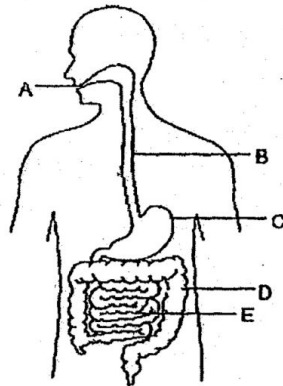
Primary 4 Science » Primary 4 Science (Term 1)

2 pts

Multiple-Choice Questions (14 Marks)

For each question, four options are given. One of them is the correct answer. Make your choice (A, B, C or D) and choose your correct answer.

The diagram shows the organs of the human digestive system, A, B, C, D and E.



Which of the following organs do not carry out the process of digestion?

- A) A and B
- B) B and D
- C) A, B and D
- D) B, D and E

Question Type: Multiple Choice
Randomize Answers: No
Date Added: Mon 20th Jul 2020
Last Modified: N/A
QID#: 22,538,367

[Answers](#) |
 [Edit](#) |
 [Duplicate](#) |
 [Used In](#) |
 [Reorder](#)

[Remove From Test](#)

Question 2

Primary 4 Science » Primary 4 Science (Term 1)

2 pts

For each question, four options are given. One of them is the correct answer. Make your choice (A, B, C or D) and choose your correct answer.

Which of the following is a function of the human skeletal system?

- ✓ A) Protects organs in the body
- B) Protects the muscular system
- C) Transports blood around the body
- D) Transports food in the digestive system

Question Type: Multiple Choice
Randomize Answers: No
Date Added: Mon 20th Jul 2020
Last Modified: N/A
QID#: 22,538,387

[Answers](#) |
 [Edit](#) |
 [Duplicate](#) |
 [Used In](#) |
 [Reorder](#)

[Remove From Test](#)

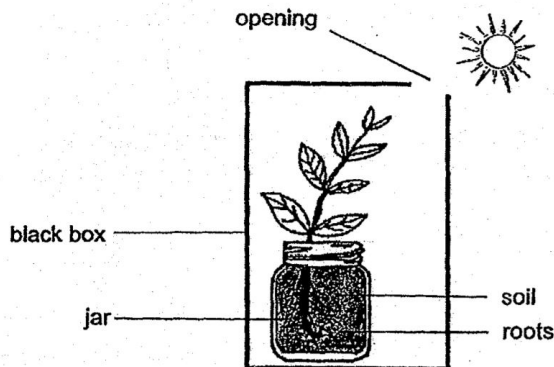
Question 3

Primary 4 Science » Primary 4 Science (Term 1)

2 pts

For each question, four options are given. One of them is the correct answer. Make your choice (A, B, C or D) and choose your correct answer.

Ali observed a plant growing in a black box with an opening. The plant is watered daily.



Which one of the following explains why the plant grew towards the opening?

- A) The plant has to be watered daily.
- ✓ B) The leaves need to obtain sunlight.
- C) The stem could not support the leaves.
- D) The roots could not hold the plant firmly to the soil.

Question Type: Multiple Choice
Randomize Answers: No
Date Added: Mon 20th Jul 2020
Last Modified: N/A
QID#: 22,538,411

Question 4

Primary 4 Science » Primary 4 Science (Term 1)

2 pts

For each question, four options are given. One of them is the correct answer. Make your choice (A, B, C or D) and choose your correct answer.

Anna studied a living thing and made the following conclusions.

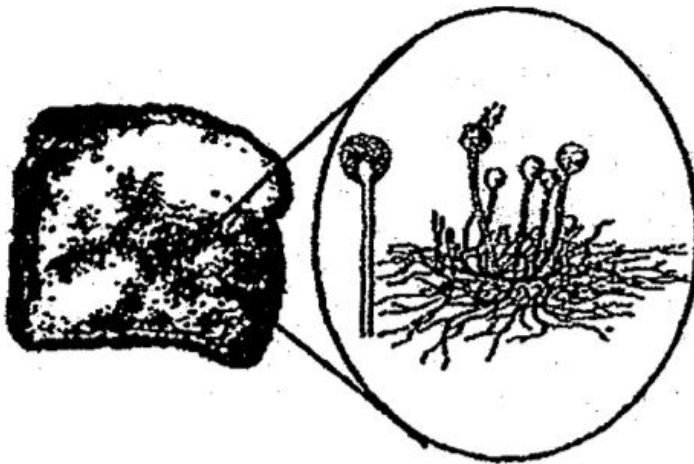
A: It reproduces by spores.

B: It does not make its own.

C: It feeds on living things, dead or alive.

Which of the following could the living thing be?

✓ A)



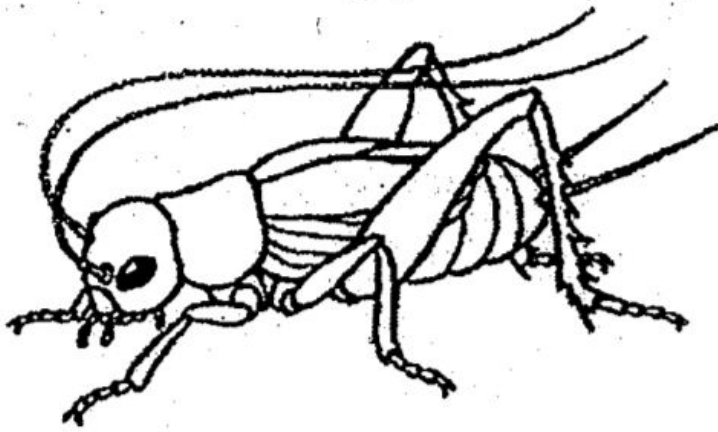
B)



C)



D)



Question Type: Multiple Choice
Randomize Answers: No
Date Added: Mon 20th Jul 2020
Last Modified: N/A
QID#: 22,538,468

[Answers](#) | [Edit](#) | [Duplicate](#) | [Used In](#) | [Reorder](#)

[Remove From Test](#)

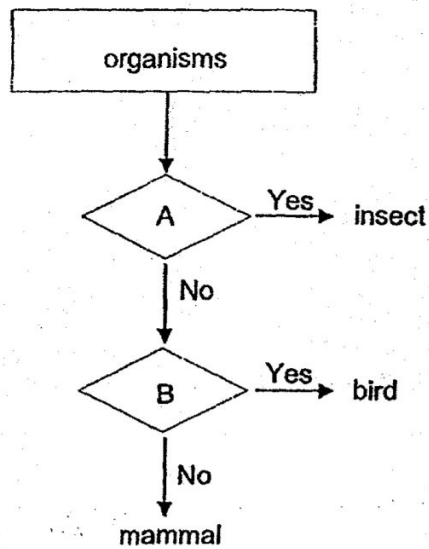
Question 5

Primary 4 Science » Primary 4 Science (Term 1)

2 pts

For each question, four options are given. One of them is the correct answer. Make your choice (A, B, C or D) and choose your correct answer.

Study the flow chart below.



Which of the following shows the characteristics represented by A and B?

- A)

A	B
has fur	has a beak
- B)

A	B
has wings	lays eggs
- ✓ C)

A	B
has six legs	has feathers
- D)

A	B
has hard body covering	has hair as body covering

Question Type: Multiple Choice
Randomize Answers: No
Date Added: Mon 20th Jul 2020
Last Modified: N/A
QID#: 22,538,582

[Answers](#) | [Edit](#) | [Duplicate](#) | [Used In](#) | [Reorder](#)

[Remove From Test](#)

Question 6

Primary 4 Science » Primary 4 Science (Term 1)

2 pts

For each question, four options are given. One of them is the correct answer. Make your choice (A, B, C or D) and choose your correct answer.

Sally placed an object near a magnet.
 She observed that the object moved towards the magnet.

Which of the following is the object likely to be made of?

- A) Steel



- B) Silver
- C) Rubber
- D) Copper

Question Type: Multiple Choice
Randomize Answers: No
Date Added: Mon 20th Jul 2020
Last Modified: N/A
QID#: 22,538,607

[Answers](#) | [Edit](#) | [Duplicate](#) | [Used In](#) | [Reorder](#)

[Remove From Test](#)

Question 7

Primary 4 Science » Primary 4 Science (Term 1)

2 pts

For each question, four options are given. One of them is the correct answer. Make your choice (A, B, C or D) and choose your correct answer.

Shaun wanted to find out how the height a ball is dropped from affects its bouncing height.

	Ball A	Ball B	Ball C	Ball D
Material	rubber	plastic	rubber	plastic
Size	big	medium	big	small
Colour	green	red	blue	yellow
Mass	10g	5g	10g	5g
Height the ball is dropped from	1 m	2 m	3 m	2m

Which of the balls in the table above should he choose in order to carry out a fair test?

- A) A and B
- B) B and C
- C) B and D
- D) A and C

Question Type: Multiple Choice
Randomize Answers: No
Date Added: Mon 20th Jul 2020
Last Modified: N/A
QID#: 22,538,627

[Answers](#) | [Edit](#) | [Duplicate](#) | [Used In](#) | [Reorder](#)

[Remove From Test](#)

Question 8

Primary 4 Science » Primary 4 Science (Term 1)

0 pts

Open-Ended Questions (11 Marks)

For each question, write your answers in the spaces given.

The diagrams below show two organisms.



Rose Plant



Fern

State a similarity between the Rose Plant and the Fern in the way they obtain food.

This question is designed for extended answers that parent/ teacher will have to assign and guide child to attempt after the test has been completed.

Grading: This question type is not graded on this system and will not affect the final score as it was designed in such a way that it requires manual assistance.

Question Type: Essay
 Date Added: Mon 20th Jul 2020
 Last Modified: N/A
 QID#: 22,538,743

Correctly answered feedback

They both make their own food.

Incorrectly answered feedback

They both make their own food.

[Answers](#) | [Edit](#) | [Duplicate](#) | [Used In](#) | [Reorder](#)

[Remove From Test](#)

Question 9

Primary 4 Science » Primary 4 Science (Term 1)

0 pts

The diagrams below show two organisms.



Rose Plant



Fern

State a difference in the way the Rose Plant and the Fern reproduce.

This question is designed for extended answers that parent/ teacher will have to assign and guide child to attempt after the test has been completed.

Grading: This question type is not graded on this system and will not affect the final score as it was designed in such a way that it requires manual assistance.

Question Type: Essay
Date Added: Mon 20th Jul 2020
Last Modified: N/A
QID#: 22,538,763

Correctly answered feedback

The Rose Plant reproduces by seeds but the Fern reproduces by spores.

Incorrectly answered feedback

The Rose Plant reproduces by seeds but the Fern reproduces by spores.

[Answers](#) | [Edit](#) | [Duplicate](#) | [Used In](#) | [Reorder](#)

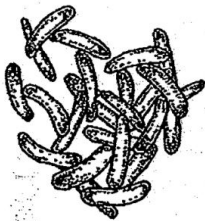
[Remove From Test](#)

Question 10

Primary 4 Science » Primary 4 Science (Term 1)

0.5 pts

The diagrams show two groups of living things.



bacteria



fungi

Complete the following table by writing 'True' if the statement is true or 'False' if the statement is false in the boxes provided. [2]

Both bacteria and fungi can reproduce.

- ✓ A) True
 B) False

Question Type: True False
Date Added: Mon 20th Jul 2020
Last Modified: N/A
QID#: 22,538,781

[Answers](#) | [Edit](#) | [Duplicate](#) | [Used In](#) | [Reorder](#)

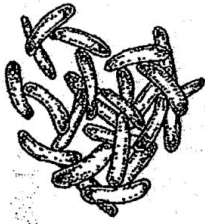
[Remove From Test](#)

Question 11

Primary 4 Science » Primary 4 Science (Term 1)

0.5 pts

The diagrams show two groups of living things.



bacteria



fungi

Complete the following table by writing 'True' if the statement is true or 'False' if the statement is false in the boxes provided. [2]

Both bacteria and fungi make their own food.

- A) True
 B) False

Question Type: True False
Date Added: Mon 20th Jul 2020
Last Modified: N/A
QID#: 22,538,787

[Answers](#) | [Edit](#) | [Duplicate](#) | [Used In](#) | [Reorder](#)

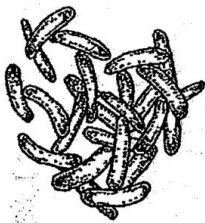
[Remove From Test](#)

Question 12

Primary 4 Science » Primary 4 Science (Term 1)

0.5 pts

The diagrams show two groups of living things.



bacteria



fungi

Complete the following table by writing 'True' if the statement is true or 'False' if the statement is false in the boxes provided. [2]

Some bacteria and fungi are useful.

- A) True
 B) False

Question Type: True False
Date Added: Mon 20th Jul 2020
Last Modified: N/A
QID#: 22,538,792

[Answers](#) | [Edit](#) | [Duplicate](#) | [Used In](#) | [Reorder](#)

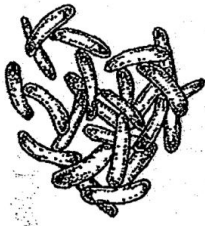
[Remove From Test](#)

Question 13

Primary 4 Science » Primary 4 Science (Term 1)

0.5 pts

The diagrams show two groups of living things.



bacteria



fungi

Complete the following table by writing 'True' if the statement is true or 'False' if the statement is false in the boxes provided. [2]

Fungi can only be seen under a microscope.

- A) True
 ✓ B) False

Question Type: True False
 Date Added: Mon 20th Jul 2020
 Last Modified: N/A
 QID#: 22,538,795

[Answers](#) | [Edit](#) | [Duplicate](#) | [Used In](#) | [Reorder](#)

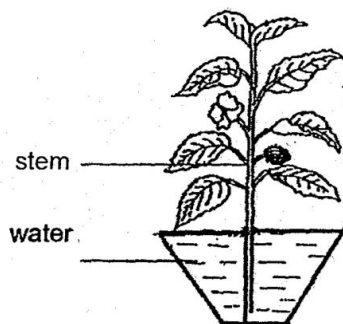
[Remove From Test](#)

Question 14

Primary 4 Science » Primary 4 Science (Term 1)

0 pts

The diagram below shows a plant, Q, in a pot of water.



Plant Q

Mary added red dye in the water.

What will she observe about the leaves of plant Q after two days? Give a reason for your answer.

This question is designed for extended answers that parent/ teacher will have to assign and guide child to attempt after the test has been completed.

Grading: This question type is not graded on this system and will not affect the final score as it was designed in such a way that it requires manual assistance.

Question Type: Essay
Date Added: Mon 20th Jul 2020
Last Modified: N/A
QID#: 22,538,823

Correctly answered feedback

Stems have tubes that transports the water with the red dye to the leaves.

Incorrectly answered feedback

Stems have tubes that transports the water with the red dye to the leaves.

[Answers](#) | [Edit](#) | [Duplicate](#) | [Used In](#) | [Reorder](#)

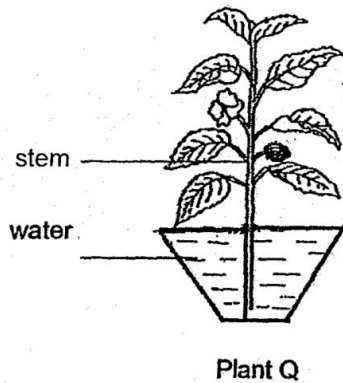
[Remove From Test](#)

Question 15

Primary 4 Science » Primary 4 Science (Term 1)

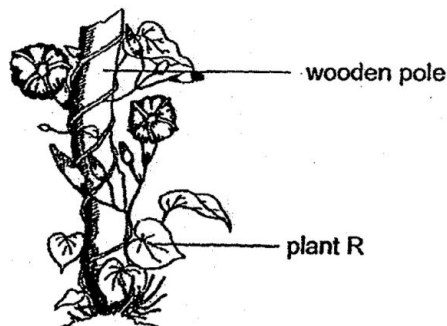
0 pts

The diagram below shows a plant, Q, in a pot of water.



Mary added red dye in the water.

Mary observed another plant, R, in the garden as shown in the diagram below.



Both plants, Q and R, need sunlight to make food. State a difference in the way plant R reach for sunlight compared to plant Q.

This question is designed for extended answers that parent/ teacher will have to assign and guide child to attempt after the test has been completed.

Grading: This question type is not graded on this system and will not affect the final score as it was designed in such a way that it requires manual assistance.

Question Type: Essay
Date Added: Mon 20th Jul 2020
Last Modified: N/A

QID#: 22,538,844

Correctly answered feedback

Plant R has a walk stem and needs to climb the wooden pole for support but Q has a strong stem that can hold itself upright.

Incorrectly answered feedback

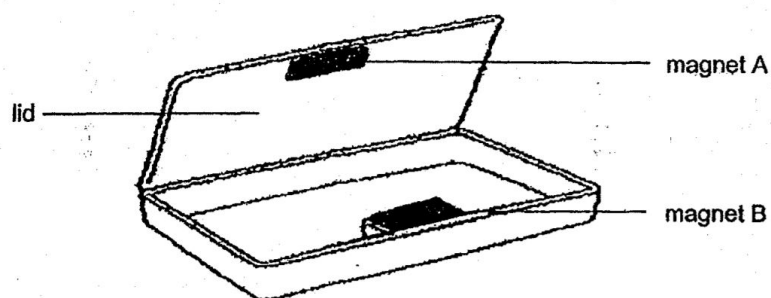
Plant R has a walk stem and needs to climb the wooden pole for support but Q has a strong stem that can hold itself upright.

[Answers](#) | [Edit](#) | [Duplicate](#) | [Used In](#) | [Reorder](#)
[Remove From Test](#)**Question 16**

Primary 4 Science » Primary 4 Science (Term 1)

1 pt

Siti bought a pencil case as shown below. It makes use of two pieces of magnets, A and B, to keep the lid shut.



Identify the poles of the magnets A and B that are facing each other.

Clue**Match**

Magnet A:

North

Points: +0.5 -0

Magnet B:

South

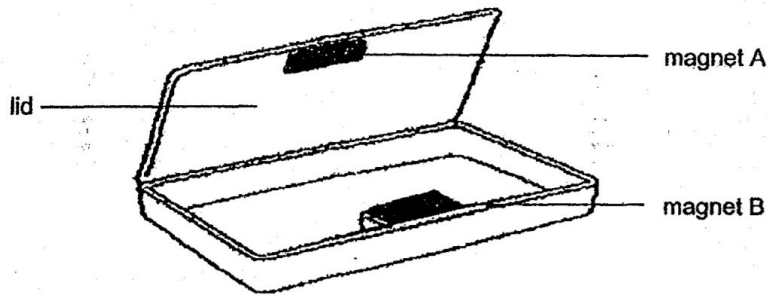
Points: +0.5 -0

Question Type: Matching**Shuffle Mode:** Shuffle Matches Only**Date Added:** Mon 20th Jul 2020**Last Modified:** N/A**QID#:** 22,538,871
[Answers](#) | [Edit](#) | [Duplicate](#) | [Used In](#) | [Reorder](#)
[Remove From Test](#)**Question 17**

Primary 4 Science » Primary 4 Science (Term 1)

1 pt

Siti bought a pencil case as shown below. It makes use of two pieces of magnets, A and B, to keep the lid shut.



Siti wanted to replace magnet A so that the lid can still be shut **tightly**. Which one of the objects, (copper, aluminium or steel), should she use?

Accepted answers:

✓ Steel

Question Type: Free Text
Date Added: Mon 20th Jul 2020
Last Modified: N/A
QID#: 22,538,887

[Answers](#) | [Edit](#) | [Duplicate](#) | [Used In](#) | [Reorder](#)

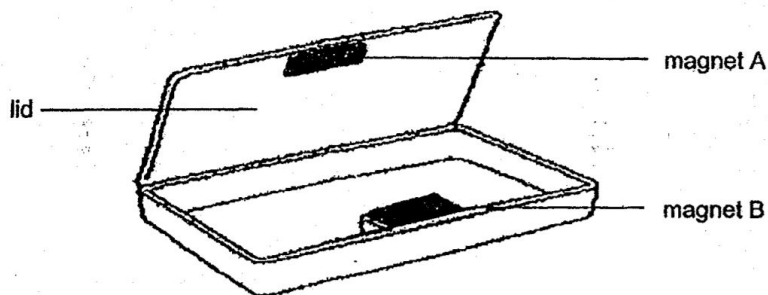
[Remove From Test](#)

Question 18

Primary 4 Science » Primary 4 Science (Term 1)

0 pts

Siti bought a pencil case as shown below. It makes use of two pieces of magnets, A and B, to keep the lid shut.



Give a reason for your answer in the object that you think Siti should use.

This question is designed for extended answers that parent/ teacher will have to assign and guide child to attempt after the test has been completed.

Grading: This question type is not graded on this system and will not affect the final score as it was designed in such a way that it requires manual assistance.

Question Type: Essay
Date Added: Mon 20th Jul 2020
Last Modified: N/A
QID#: 22,538,967

Correctly answered feedback

Steel is a magnetic material.

Incorrectly answered feedback

Steel is a magnetic material.

[Answers](#) | [Edit](#) | [Duplicate](#) | [Used In](#) | [Reorder](#)

[Remove From Test](#)